

# Well Wairarapa

Our plan for the future (July 2008-June 2009)

## District Annual Plan – Summary

Each year, the Wairarapa DHB works with its community to improve the health of Wairarapa people. Health providers, community groups, government agencies, schools and many other interested parties are all involved.

The Well Wairarapa District Annual Plan is the yearly 'road map' that contains the actions needed to improving health, on our way to achieving the goals set out in the longer-term Strategic Plan. The District Annual Plan helps all health providers and interested groups in the district to 'keep on track' and work together to make a difference to the health of Wairarapa people.

This summary and the accompanying "Making a Difference" sheets are designed to highlight key priorities and actions for the year. Page references throughout these summaries show where more detail can be found in the full version of the District Annual Plan.

## Where does the District Annual Plan fit?



*The 2008 Health Needs Assessment the Wairarapa DHB contains a wealth of information about the make-up and health of our population. It guides planners who set priorities and strategies for the future.*

*The Health Needs Assessment supports the development and review of the DHB's Strategic Plan for a Well Wairarapa which is reviewed every three years.*

*The Well Wairarapa District Annual Plan contains the actions that involve the Wairarapa DHB and many other organisations working together to make a difference to the health of Wairarapa people.*

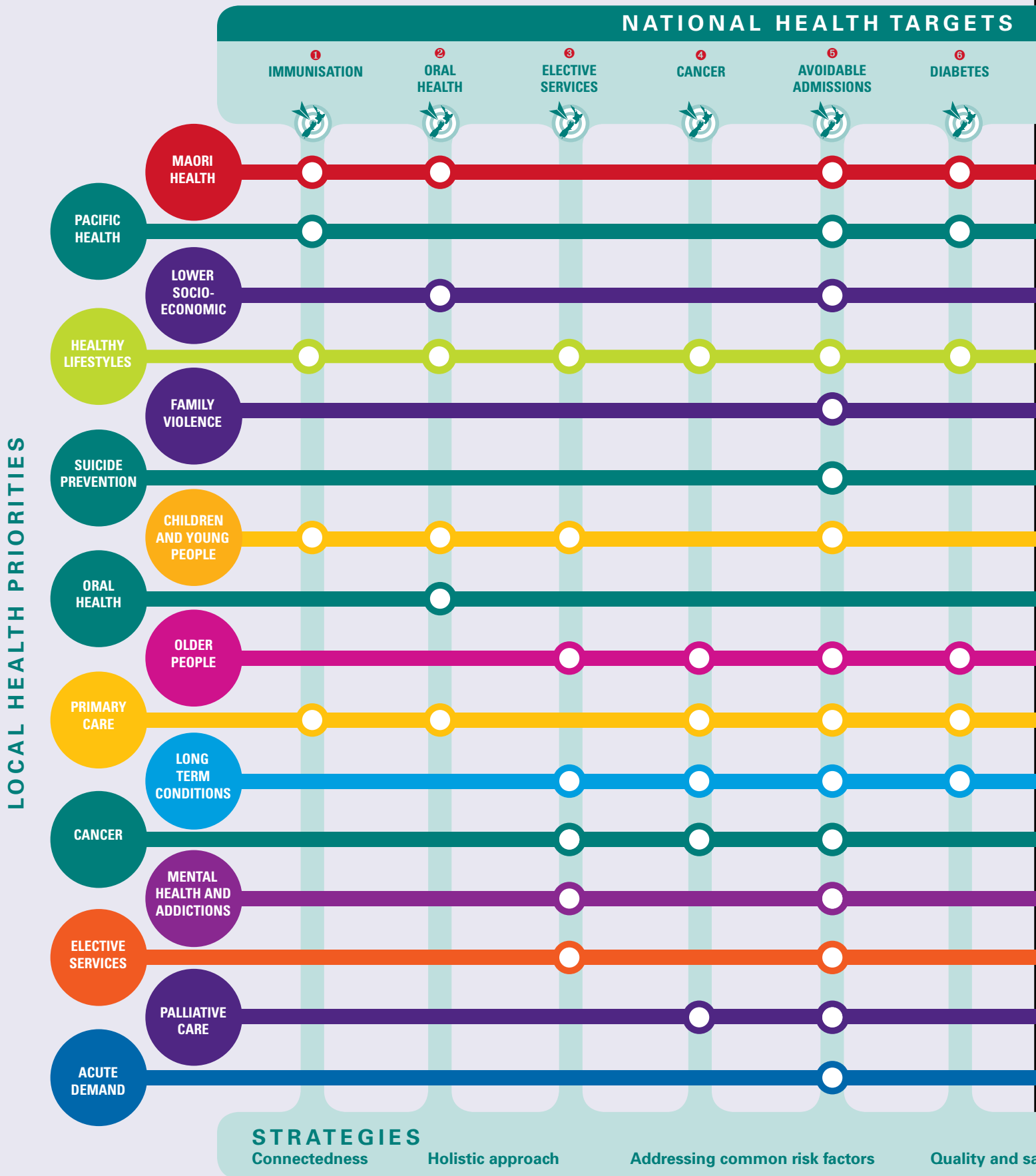
## Making a difference

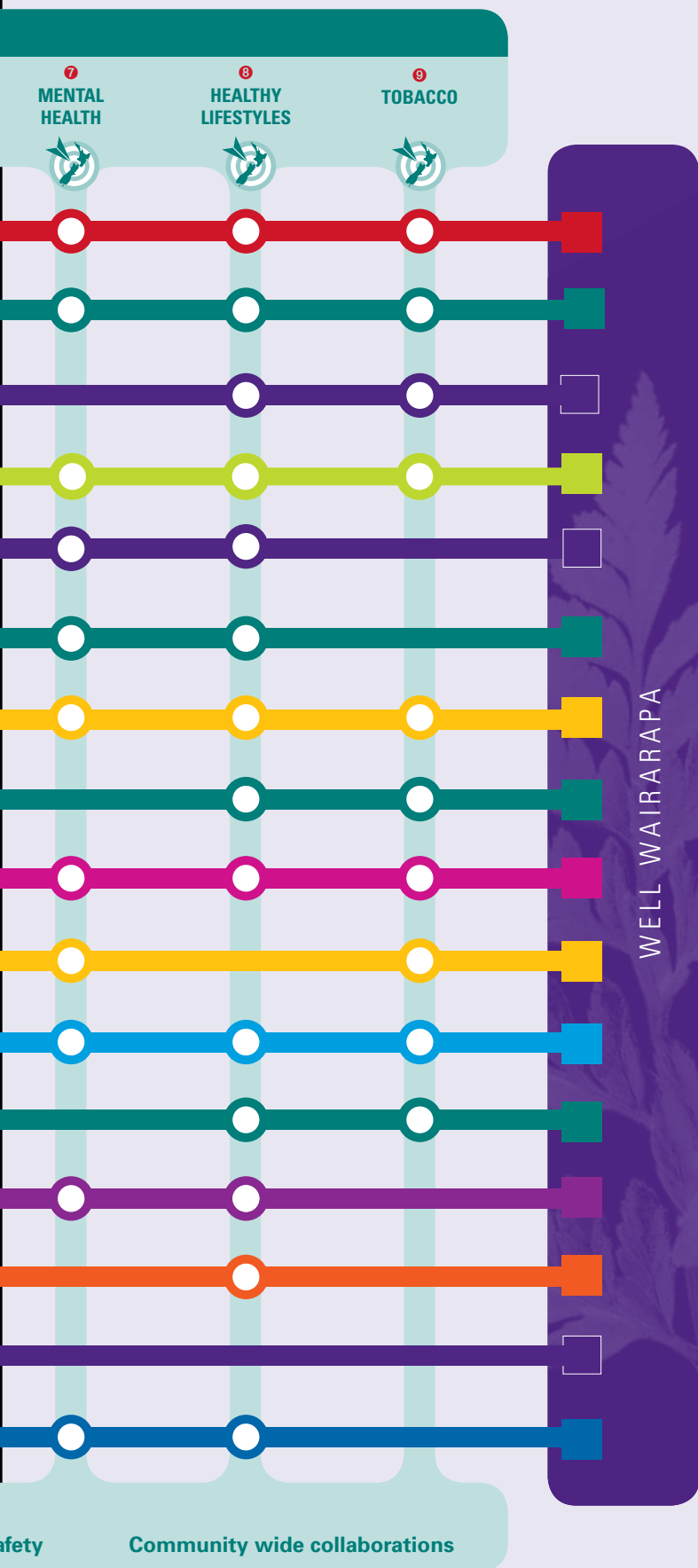
This year there are many exciting things happening, on the road to a Well Wairarapa. The Wairarapa DHB and many other services and groups across the community are involved with this. What is your role in 2008/09?



**Wairarapa DHB**  
Wairarapa District Health Board  
Te Poari Hauora a-rohe o Wairarapa

# The Patient Journey





## Improving health — Wairarapa’s Road Map for the Year

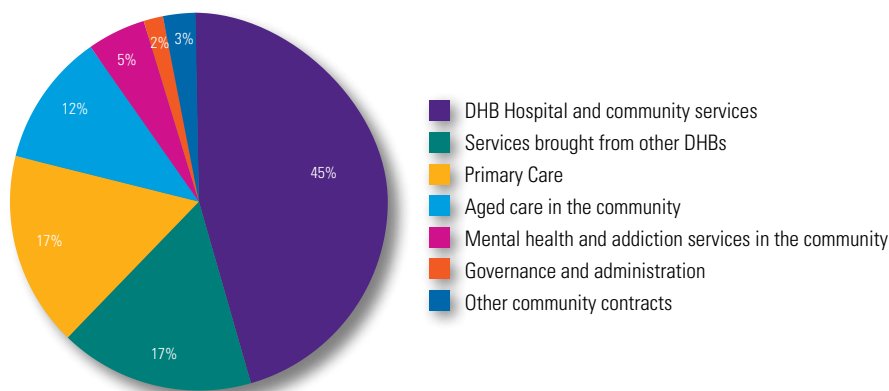
Many paths interweave to form the map of healthcare in the Wairarapa.

The Ministry of Health sets goals for the whole country, called the National Health Targets. There are nine of them, shown as the vertical paths in the diagram below. For more detail on these see the enclosed National Health Targets sheet.

Woven into these are our Wairarapa health priorities, shown as the horizontal paths. Each of those paths contains many tracks – these are the actions described in our District Annual Plan. Details on most of the year’s priorities are included in the enclosed ‘Making a Difference’ sheets.

Collectively, the whole map describes the patient journey supported by five strategies being used to help define the best path for every patient.

## How we spend our money



For more detail on the year's key actions for each priority area see the individual "Making a Difference" sheets:

- Improving Maori Health
- Improving the Health of Children & Young People
- Improving Mental Health & Reducing Addictions
- Improving the Health of Older People
- Progress the Primary Healthcare Strategy
- Encouraging Healthy Lifestyles
- Managing Long-Term Conditions
- Reducing Family Violence
- More Efficient Hospital services
- Improving Access to Elective Services
- The 9 National Health Targets

Actions for the year are not limited to these summaries.

For more detail see:

- the Well Wairarapa District Annual Plan on [www.wairarapa.dhb.org.nz](http://www.wairarapa.dhb.org.nz)
- or contact Jen Bergantino on 06 946 9882, or email [jen.bergantino@wairarapa.dhb.org.nz](mailto:jen.bergantino@wairarapa.dhb.org.nz)

Full and summary versions of the 2008 Wairarapa Health Needs Assessment are available on CD from late August 2008, or on [www.wairarapa.dhb.org.nz](http://www.wairarapa.dhb.org.nz)

## Strategic Plan Review 2008/09

This year, it's time to review our year Strategic Plan. From September 2008 a wide-ranging consultation process will take place on the strategic direction for health in Wairarapa over the next three years and beyond. Your views are important in this.

Watch out for invitations to have your say, or register your interest by contacting Jen Bergantino on 06 946 9882 or email [jen.bergantino@wairarapa.dhb.org.nz](mailto:jen.bergantino@wairarapa.dhb.org.nz)