

Cancer of the Breast	2
Breast Screening.....	3
Conclusion.....	4

Cancer of the Breast

In New Zealand breast cancer is the most common cancer among females. Breast cancer makes up just over a quarter of new cancers diagnosed in women, and almost one in five cancer deaths.

Figure 1: Breast Cancer Registrations, Wairarapa DHB, Age volume proportion profile 1991 - 2000

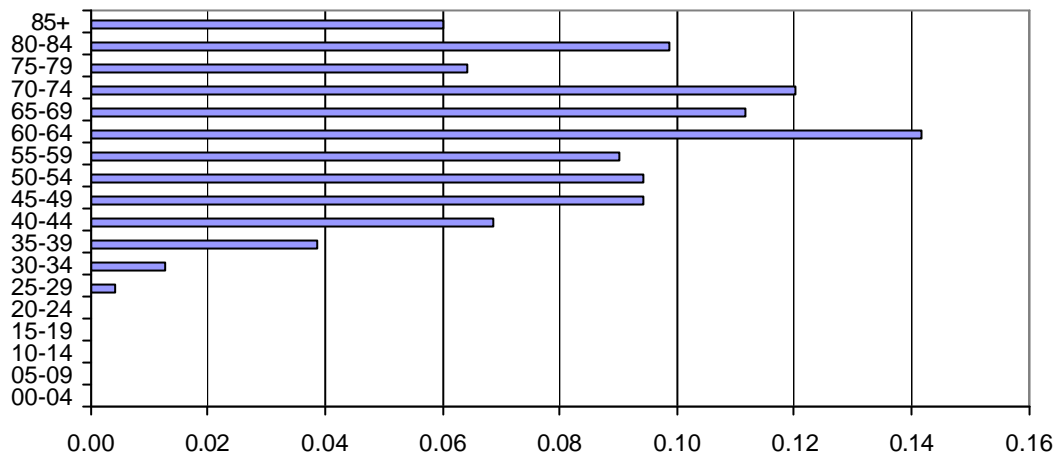
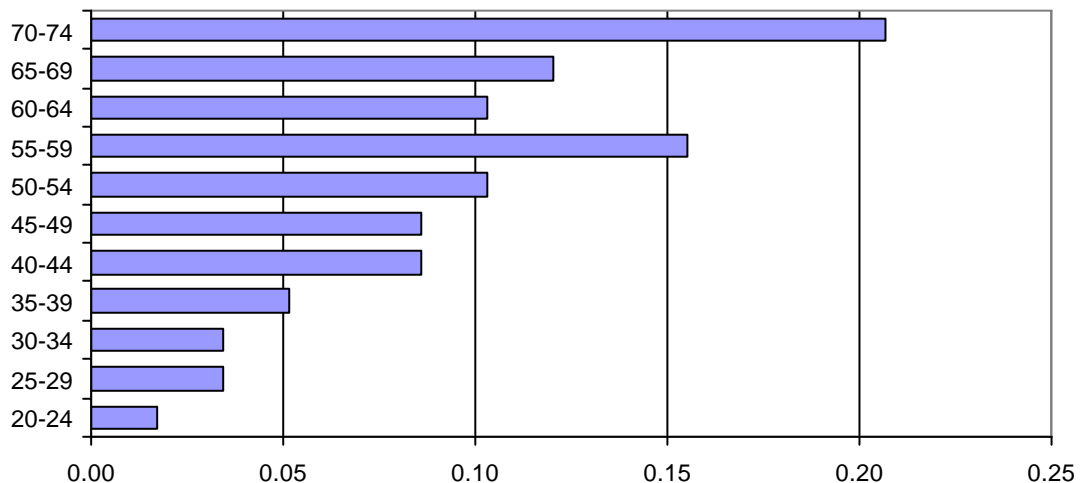


Figure 2: Breast Cancer Mortality, Wairarapa DHB, Age volume proportion profile 1991 - 2000



Between 1981–2000 period, breast cancer registration rates have gradually increased. Overall, breast cancer mortality has decreased slightly since the 1980s. While there have been decreases in European/Other rates of breast cancer during the late 1980s and 1990s, Maori and Pacific rates increased in the 1990s.

Breast cancer registrations are forecast to increase further over the next decade (as a result of the screening programme), whereas mortality is projected to continue to decline. Maori women have a higher registration and mortality rate of breast cancer compared to European/Other women.

Breast cancer registrations and mortality do not show a consistent relationship with NZDep2001.

Breast cancer in the Wairarapa is similar to the national rate and following the national trend.

Figure 3: Breast Cancer Registrations, Wairarapa DHB, Age standardised rate per 10,000 1991 – 2000

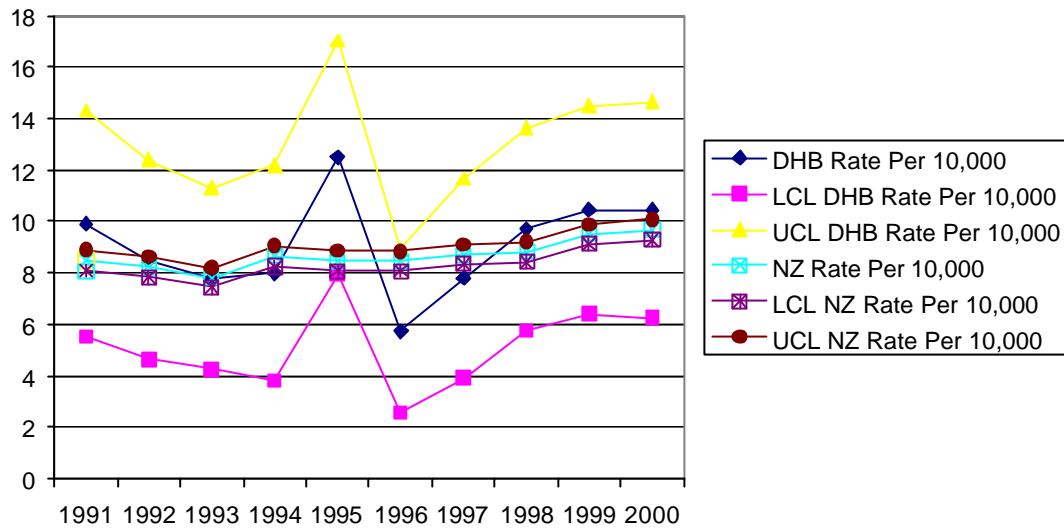
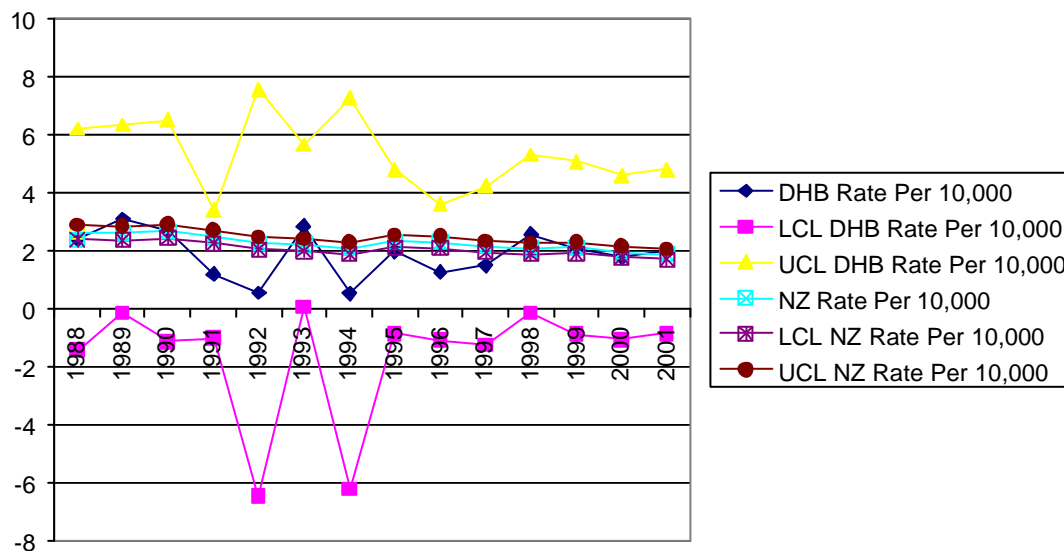


Figure 4: Breast Cancer Avoidable Mortality, Wairarapa DHB, Age standardised rate per 10,000 1988 –2001



Breast Screening

Maori and Pacific ethnic group breast screening coverage rates are lower than for other ethnicities. The Maori coverage rates in particular are high in the more rural TAs in comparison to most regions, although this is a very small population. Overall,

coverage rates for the Wairarapa region are better than the Central Region (64.37%) and equivalent to the national rate. The coverage rates are also fairly consistent overall between TAs, whilst most other regions show greater variations.

Table 1: Wairarapa Breast Screening Coverage by Territorial Area and Ethnicity for Eligible women in the 24 months ending 31 December 2003

TA	Ethnicity	Total
Carterton District	Maori	63.33%
	Pacific	50.00%
	Other	65.81%
Carterton District Total		65.54%
Masterton District	Maori	45.10%
	Pacific	13.33%
	Other	72.35%
Masterton District Total		69.70%
South Wairarapa District	Maori	62.12%
	Pacific	33.33%
	Other	70.26%
South Wairarapa District Total		69.52%
Grand Total		68.90%

Conclusion

Individual cancers have different patterns of distribution and trends by age (though most affect older age groups and specific other sections of this Health Needs Analysis describe common cancers in those age groups), gender, ethnicity (though onset tends to be in younger ages for Maori and Pacific peoples) and socio-economic deprivation (though there is either no relationship or higher rates in more deprived populations, i.e. not higher rates in less deprived populations).